

# LEANA

## Automatic sliding door

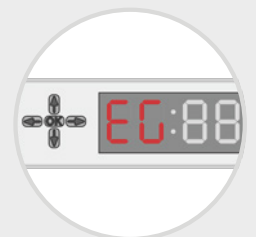
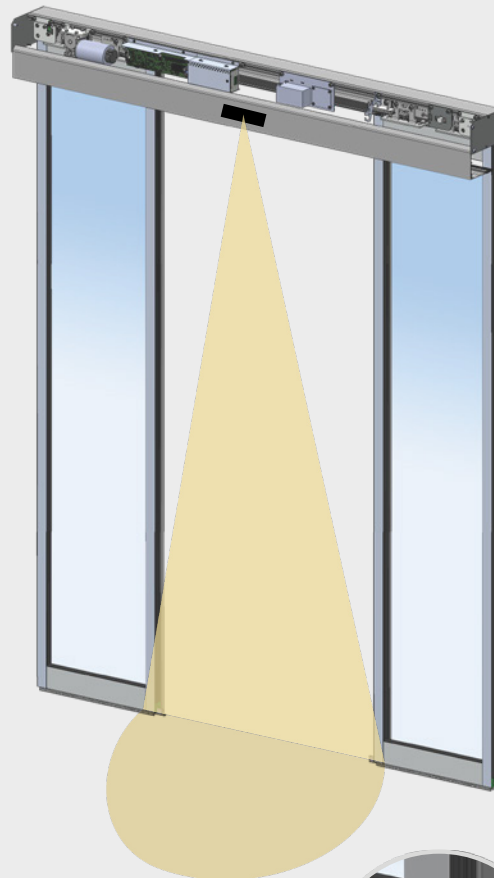
- ? SIMPLE
- ? RELIABLE
- ? ACCESSIBLE

### Compact operator 100 mm

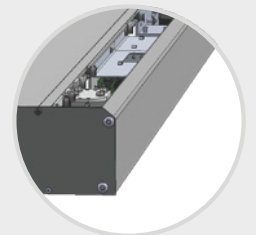
- Refined design, smooth surfaces facilitating the installation of activation and safety sensors.
- Pivoting and removable cover for access to the mechanism.
- Possibility of under-ceiling installation.
- Black steel end caps fitted with lugs to suspend the cover during maintenance operations, without necessarily disconnecting the sensors.
- Cover locking device.

### Proven Technologies

- Universal low power switching power supply.
- Calibrated motorization for light panels.
- Logic card integrating a parameter display.
- Backup battery in the event of a power outage (option).



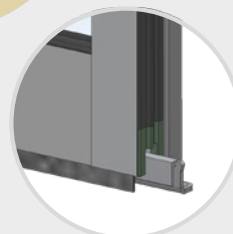
Integrated parameter display



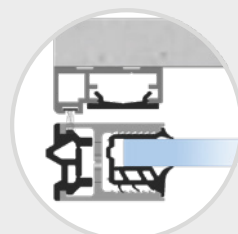
Smooth and clean cover



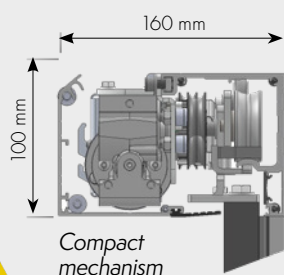
Cover hooking device



Panel floor guide on jamb



Thin jamb 15 x 35 mm

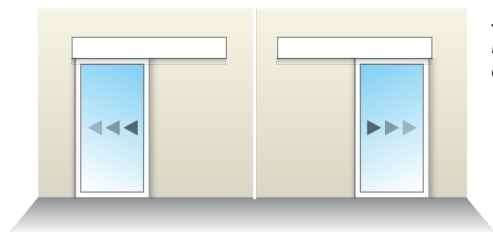


Compact mechanism

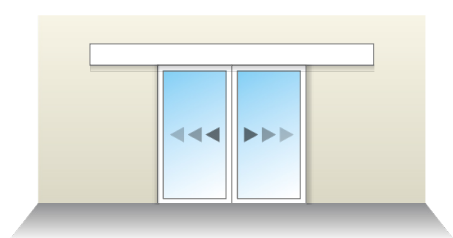


## Go to simplicity !

Two models, a reliable operator and peripheral accessories suitable for everyday use, all the essentials in a practical, functional and minimalistic design.



Single model, left or right closing



Bi-part model

## A glass door for an entry bathed in natural light

The panels are available in different ranges of profiles :

- G25 frame, thin and elegant, accepting glazing up to 10 mm thick.
- G38 frame, robust and secure, accepting insulated glazing up to 26 mm thick. They also provide better thermal comfort and accept a key lock (cylinder or European half-cylinder).
- Lumina all-glass version for a completely transparent door and maximum window clarity.

## Control your automatic door easily

- Opening/closing direction
- Width of openings
- Panel speed
- Opening delays
- Secure access by code
- Display of operating faults



MECHANICAL	SLIDING
Installation	Surface mounted
Structure	Aluminum
Header (H x D)	Applied 100 x 160 mm
Passage width min./max.	1 panel : 750 / 1 800 mm 2 panels : 800 / 2 400 mm
Passage height max.	2 500 mm

PERFORMANCE	
Max panels weight	1 x 120 kg* 2 x 120 kg*
Opening speed	1 panel : 10 to 80 cm/s 2 panels : 20 to 160 cm/s
Closing speed	1 panel : 10 to 80 cm/s 2 panels : 20 to 160 cm/s
Hold-opening delay	1 to 60 s
Opening force	3 to 15 daN
Closing force	3 to 15 daN

\* Degraded mode

ELECTRICAL ENVIRONMENT	
Switched-mode power supply	Sector 50-60 Hz, 90 V-250 V $\pm 10\%$ with ground, double pole protection
Power consumption max./average	125 W / 20 W
Motor voltage / Battery	12 Vcc / 1,2 A.h
Relative humidity level	10 % to 93 % non-condensing
Operating temperature	- 20 °C/+ 60 °C

STANDARDS	
Electromagnetic compatibility : directives 2004/108/ CE, electrical safety – low voltage: directives 2006/95/CE CEE, building products : directives 89/106/CE et 93/68/CE, machine : directive 2006/42/CE CEM : emission for residential, commercial and light EN 61000-6-3 industrial environments.	

EN 61000-6-2	CEM : immunity for industrial environments.
EN 60335-1	Safety of household and similar electrical appliances.
EN 13849-1	Safety of machinery - parts of control systems relating to safety
EN 16005	Motorized door units for pedestrians : usage safety

EQUIPMENT / OPTIONS	
Integrated parameter console	•
Control/setting console Naviblu	•
Passage detection/safety radar	•
Opening safety infrared curtain	•
Backup battery	•
Flexible adhesive mode selector (6 modes)	•
Key switch	•
Cover safety cable	•
Mechanical lock	•

• Standard ○ Option

